

# Stage 1 and 2 Archaeological Assessment of 13030 Lundy's Lane, Part of Lot 89, Geographic Township of Thorold, County of Welland, Now in the City of Thorold, Regional Municipality of Niagara

---

## Revised Supplementary Documentation

Prepared for:

### **RUDANCO Hospitality Corporation**

4728 Dorchester Road

Unit 11B, 2<sup>nd</sup> Floor

Niagara Falls, Ontario L2E 7H9

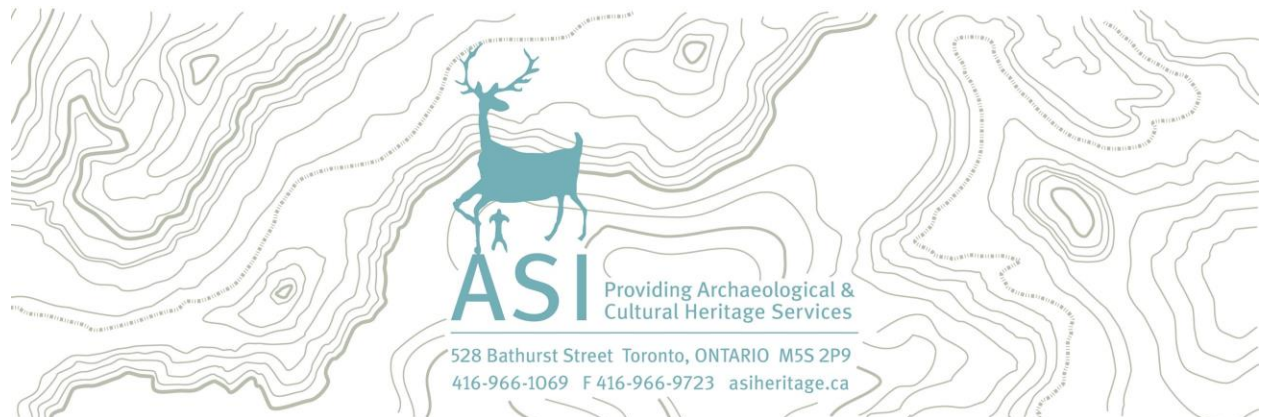
(905) 380-6016

Archaeological Licence: P449 (Bhardwaj)

Project Information Form: P449-0558-2021

Archaeological Services Inc. File: 21PL-245

29 November 2022



## Table of Contents

|     |                                    |   |
|-----|------------------------------------|---|
| 1.0 | Detailed Site Location Information | 3 |
| 2.0 | Maps                               | 6 |
| 3.0 | Hydro One Contact                  | 8 |

### List of Tables

|          |                          |   |
|----------|--------------------------|---|
| Table 1: | UTM Coordinates for Site | 3 |
|----------|--------------------------|---|

### List of Maps

|           |  |   |
|-----------|--|---|
| Figure 1: | Detailed Location of Sites and Findspots | 7 |
|-----------|--|---|



## 1.0 Detailed Site Location Information

**UTM Grid Zone:** 17T

**Datum:** World Geodetic System 1984

**Method of Correction:** n/a

Global Positioning System readings were recorded with a Trimble Catalyst Global Navigation Satellite System unit using World Geodetic System 1984. At the time of recording Global Positioning System coordinates, the conditions were optimal.

**Table 1: UTM Coordinates for Site**

| <b>Location</b> | <b>UTM Coordinates</b> | <b>Error (+/- Metres)</b> | <b>Coordinate Type</b> | <b>Elevation</b>           |
|-----------------|------------------------|---------------------------|------------------------|----------------------------|
| Site AgGt-292   | 4771859, 648371        | 1                         | Site Centre            | 185 metres above sea level |
|                 | 4771887, 648369        | 1                         | North                  | 185 metres above sea level |
|                 | 4771856, 648412        | 1                         | East                   | 185 metres above sea level |

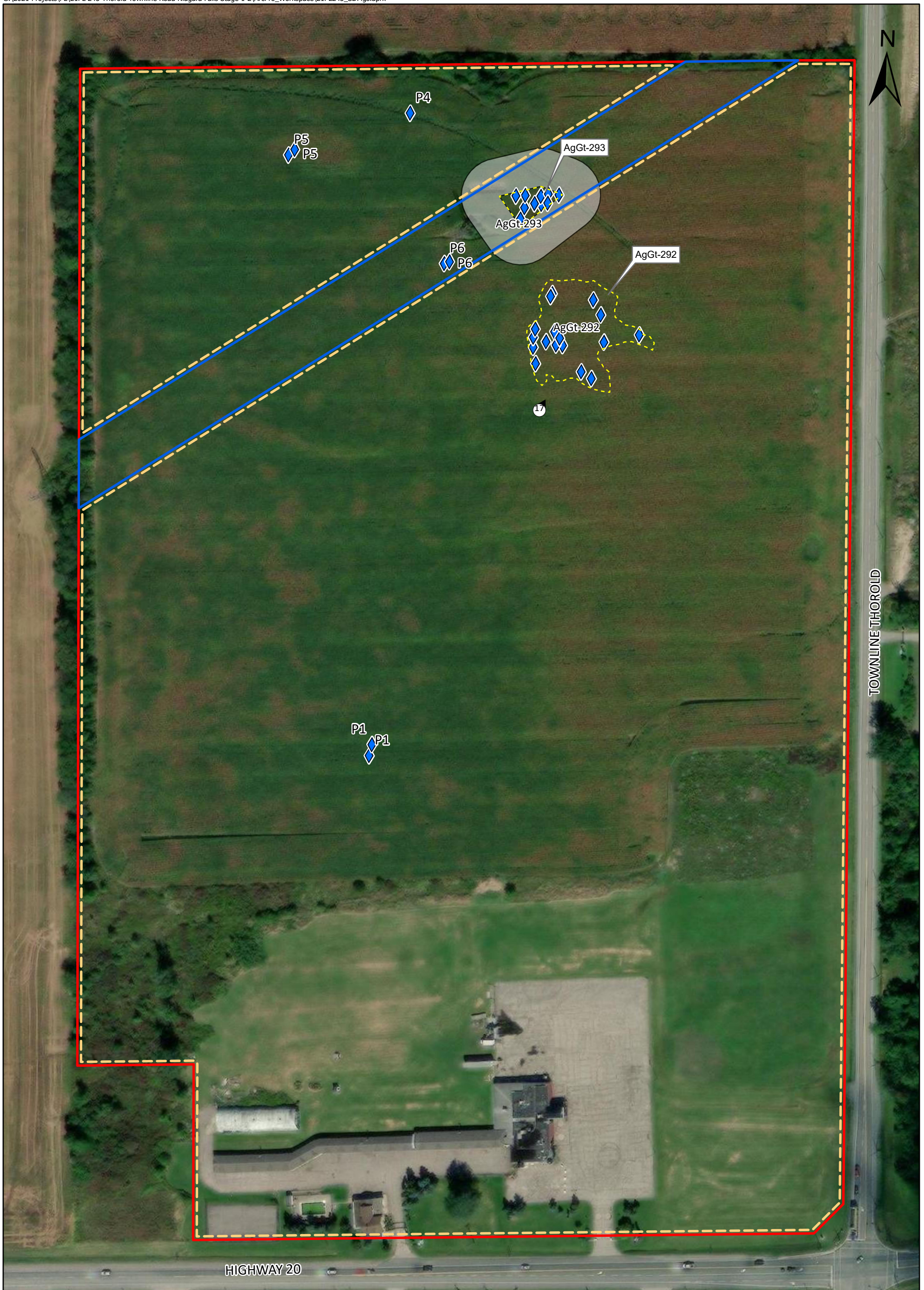
| <b>Location</b> | <b>UTM Coordinates</b> | <b>Error (+/- Metres)</b> | <b>Coordinate Type</b> | <b>Elevation</b>           |
|-----------------|------------------------|---------------------------|------------------------|----------------------------|
|                 | 4771829, 648389        | 1                         | South                  | 185 metres above sea level |
|                 | 4771859, 648345        | 1                         | West                   | 185 metres above sea level |
| Site AgGt-293   | 4771927, 648344        | 1                         | Site Centre            | 185 metres above sea level |
|                 | 4771936, 648350        | 1                         | North                  | 185 metres above sea level |
|                 | 4771932, 648361        | 1                         | East                   | 185 metres above sea level |
|                 | 4771914, 648340        | 1                         | South                  | 185 metres above sea level |
|                 | 4771930, 648328        | 1                         | West                   | 185 metres above sea level |

| <b>Location</b>   | <b>UTM Coordinates</b> | <b>Error (+/- Metres)</b> | <b>Coordinate Type</b> | <b>Elevation</b>           |
|---|------------------------|---------------------------|------------------------|----------------------------|
| P1  | 4771634, 648270        | 1                         | Findspot               | 185 metres above sea level |
| P4  | 4771971, 648280        | 1                         | Findspot               | 185 metres above sea level |
| P5  | 4771947, 648217        | 1                         | Findspot               | 185 metres above sea level |
| P6  | 4771893, 648300        | 1                         | Findspot               | 185 metres above sea level |
| Hydro pole on the south side of Highway Twenty (Lundy's Lane) | 648398, 4771353        | 1                         | Off-Site Datum         | 185 metres above sea level |

## 2.0 Maps

See following pages for detailed assessment maps and site locations.





|  |   |  |   |   |
|--|---|--|---|---|
|  | STUDY AREA<br>HYDRO ONE RIGHT-OF-WAY<br>13030 LUNDY'S LANE PROPERTY LIMITS<br>20M SITE BUFFER<br>PHOTO LOCATION AND DIRECTION | OFFSITE DATUM<br>SITE LIMIT<br>INDIGENOUS ARTIFACT | Maxar, Microsoft<br><br>Projection: NAD 1983 UTM Zone 17N<br>Scale: 1:1,800<br>Page Size: 11 x 17 | 0 <span style="margin-left: 100px;">50</span><br><br>Metres |
|  |   |  | ASI Project No.: 21PL-425<br>Date: 11/16/2022 3:40 PM   | Drawn By: pbikoulis<br>File: 21PL245_SDFig                  |

Figure 1: Detailed Location of Sites and Findspot

## 3.0 Hydro One Contact

Greg Gowan  
Real Estate Services Supervisor  
Hydro One Networks Inc.  
416-527-3487  
Greg.gowan@hydroone.com

