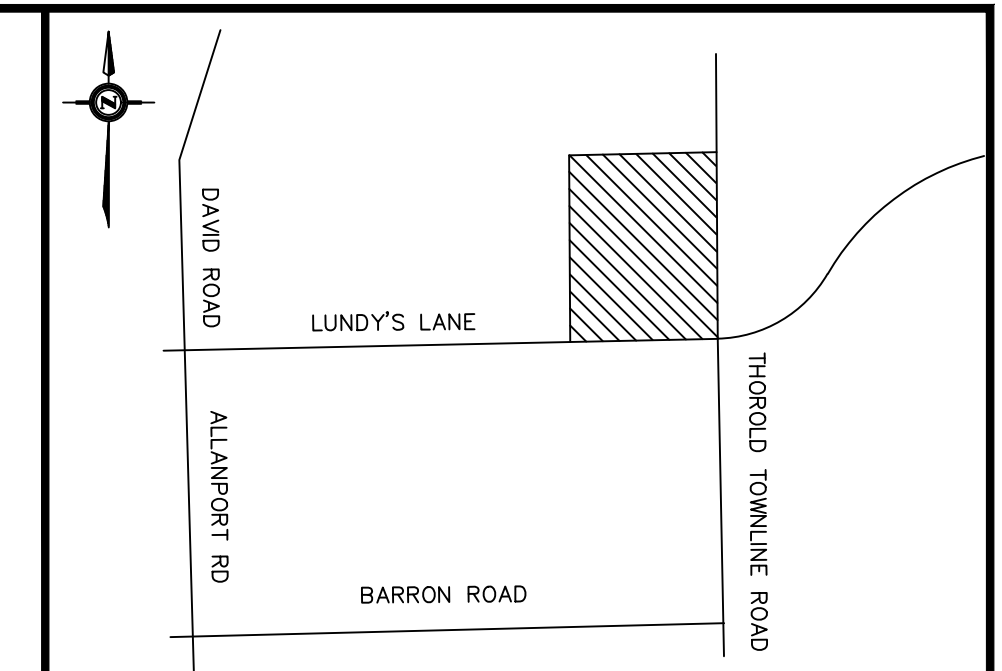


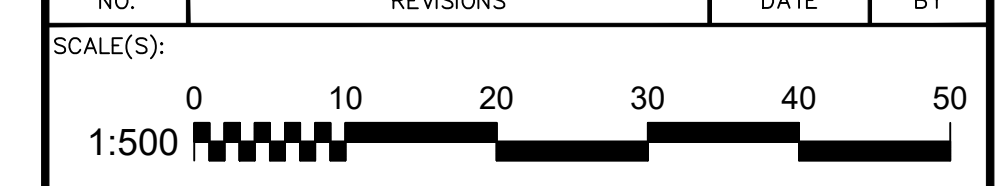
CONTRACTOR TO PROVIDE AS-BUILT DRAWINGS UPON COMPLETION OF ALL WORKS TO THE ODAN/DETECH GROUP

CONTRACTOR TO VERIFY ALL INVERTS, SIZE, MATERIAL, AND LOCATION OF ALL SERVICES PRIOR TO CONSTRUCTION AND REPORT ANY DISCREPANCIES TO THE ODAN/DETECH GROUP



- KEY PLAN
Scale: N.T.S.
- PROPOSED STREETLIGHT: COBRA-STYLE, DIRECT BURIED 7.8m STEEL POLE, 1.8m ALUMINUM TAPERED ELLIPTICAL ARM, RFS-45W16LED4K-G2-R2S (45W)
QTY: 47
 - PROPOSED STREETLIGHT: COBRA-STYLE, DIRECT BURIED 7.8m STEEL POLE, 1.8m ALUMINUM TAPERED ELLIPTICAL ARM, RFS-53W16LED4K-G2-R2S (53W)
QTY: 11

NO.	REVISIONS	DATE	BY
1	ISSUED FOR DRAFT PLAN APPROVAL	2023/12/15	T.I.



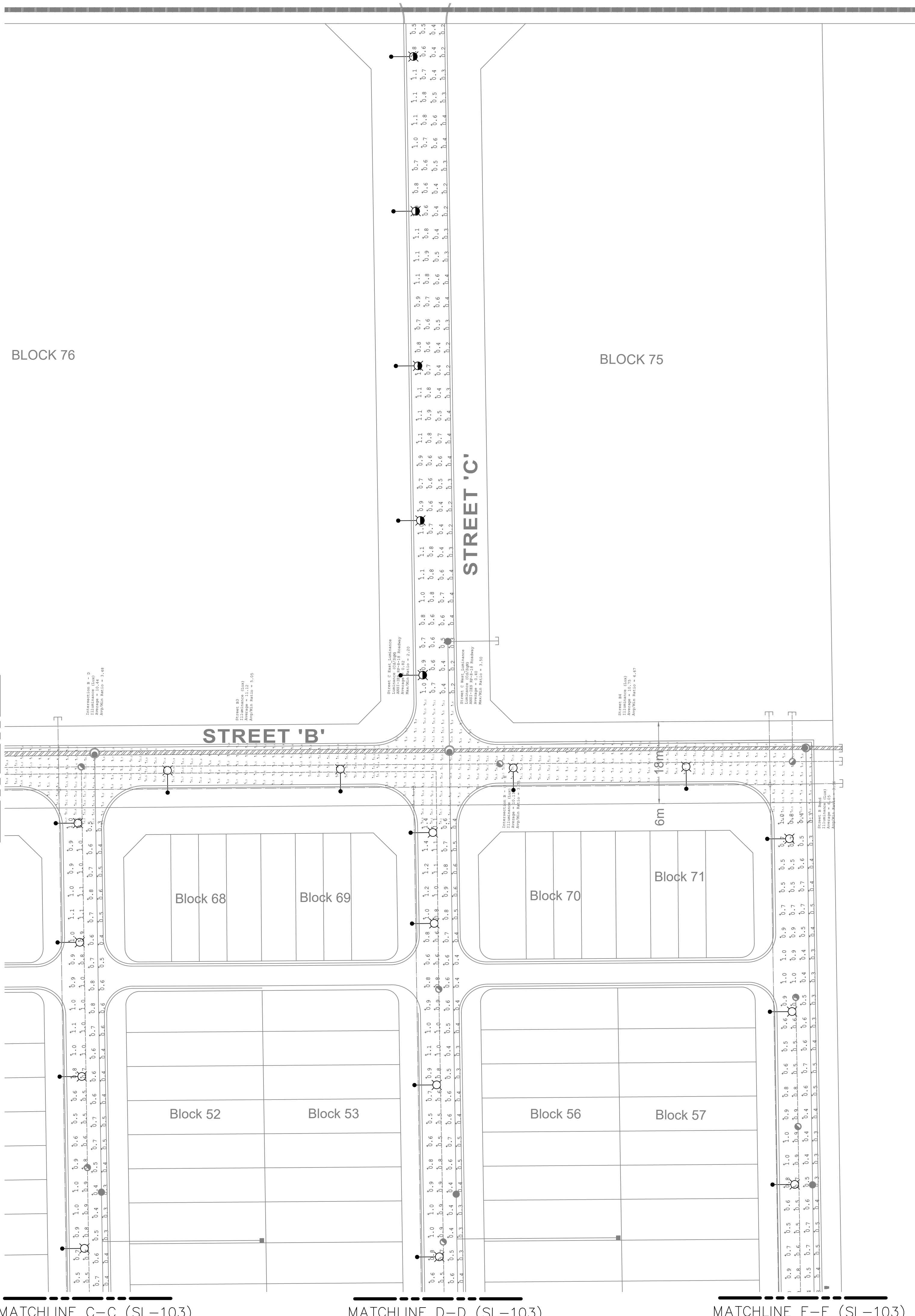
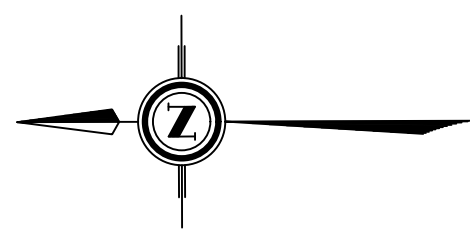
DRAWING TITLE:
STREETLIGHTING LAYOUT

PROJECT:
HIGHWAY 20 & THOROLD TOWNLINE ROAD SUBDIVISION
EAST SIDE OF GARNER RD, SOUTH OF LUNDY'S LANE
THOROLD, ONTARIO

CLIENT:
RUDANCO HOSPITALITY CORPORATION
4728 DORCHESTER RD.
NIAGARA FALLS



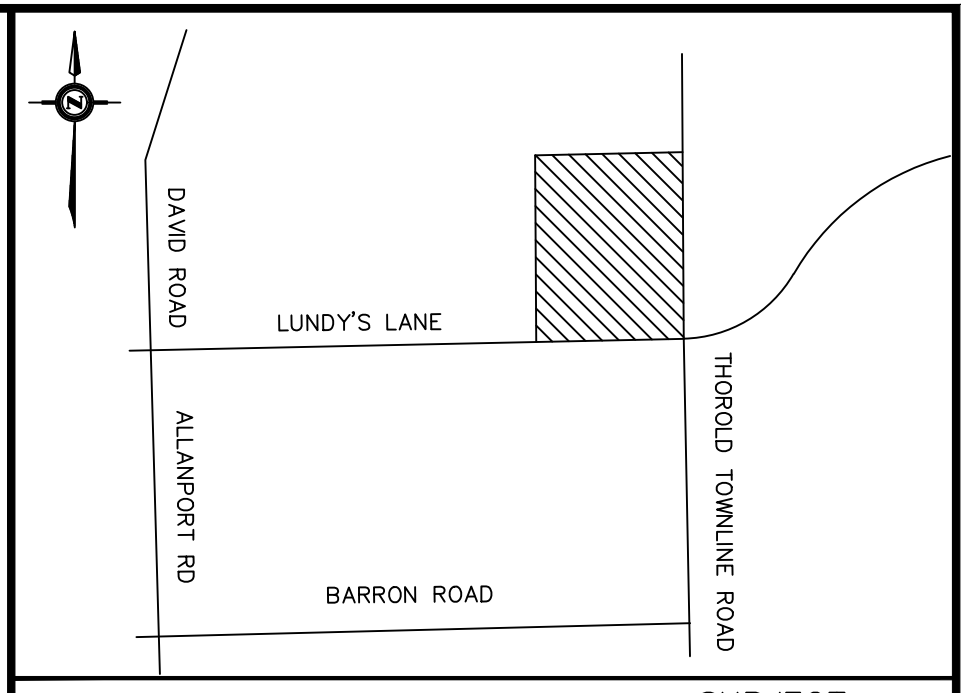
	DESIGNED BY:	PROJECT No.:
	T.I.	0121
	DRAWN BY:	DATE:
	T.I.	2023/12/15
CHECKED BY:	DRAWING No.:	
A.B.	SL-101	
APPROVED BY:	ENGINEER	
A.B.		



Label	CalcType	Units	Avg/Min	LV Ratio	Avg
18m Roadway East Luminance	Luminance	Cd/Sq.m	1.52	N.A.	0.76
18m Roadway East Veil Lum	Veiling Luminance	Cd/Sq.m	N.A.	0.13	N.A.
18m Roadway West Luminance	Luminance	Cd/Sq.m	1.50	N.A.	0.45
18m Roadway West Veil Lum	Veiling Luminance	Cd/Sq.m	N.A.	0.22	N.A.
20m Roadway East L Luminance	Luminance	Cd/Sq.m	1.35	N.A.	0.81
20m Roadway East L Veil Lum	Veiling Luminance	Cd/Sq.m	N.A.	0.12	N.A.
20m Roadway West Luminance	Luminance	Cd/Sq.m	2.05	N.A.	0.41
20m Roadway West Veil Lum	Veiling Luminance	Cd/Sq.m	N.A.	0.24	N.A.
24m Roadway East Luminance	Luminance	Cd/Sq.m	2.05	N.A.	0.41
24m Roadway East Veil Lum	Veiling Luminance	Cd/Sq.m	N.A.	0.24	N.A.
24m Roadway West Luminance	Luminance	Cd/Sq.m	1.40	N.A.	0.84
24m Roadway West Veil Lum	Veiling Luminance	Cd/Sq.m	N.A.	0.24	N.A.
6m Roadway East Luminance	Luminance	Cd/Sq.m	1.35	N.A.	0.54
6m Roadway East Veil Lum	Veiling Luminance	Cd/Sq.m	N.A.	0.19	N.A.
6m Roadway West Luminance	Luminance	Cd/Sq.m	1.37	N.A.	0.41
6m Roadway West Veil Lum	Veiling Luminance	Cd/Sq.m	N.A.	0.24	N.A.
Intersection A = B	Illuminance	Lux	2.99	N.A.	12.27
Intersection A = G	Illuminance	Lux	3.96	N.A.	8.31
Intersection B = C = E	Illuminance	Lux	3.75	N.A.	10.13
Intersection B = D	Illuminance	Lux	3.48	N.A.	10.44
Intersection D = G	Illuminance	Lux	3.11	N.A.	8.41
Intersection E = G	Illuminance	Lux	4.80	N.A.	8.16
Intersection F = G	Illuminance	Lux	5.74	N.A.	8.03
Street A East Luminance	Luminance	Cd/Sq.m	N.A.	N.A.	0.40
Street A East Veil Lum	Veiling Luminance	Cd/Sq.m	N.A.	0.25	N.A.
Street A West Luminance	Luminance	Cd/Sq.m	N.A.	N.A.	0.82
Street A West Veil Lum	Veiling Luminance	Cd/Sq.m	N.A.	0.24	N.A.
Street A1	Illuminance	Lux	7.81	N.A.	11.71
Street A2	Illuminance	Lux	3.37	N.A.	11.45
Street A3	Illuminance	Lux	3.68	N.A.	12.14
Street B Bend	Illuminance	Lux	3.36	N.A.	6.05
Street B1	Illuminance	Lux	4.85	N.A.	10.18
Street B2	Illuminance	Lux	4.83	N.A.	11.10
Street B3	Illuminance	Lux	5.05	N.A.	11.12
Street B4	Illuminance	Lux	4.67	N.A.	10.75
Street C East Luminance	Luminance	Cd/Sq.m	N.A.	N.A.	0.82
Street C East Veil Lum	Veiling Luminance	Cd/Sq.m	N.A.	0.24	N.A.
Street C West Luminance	Luminance	Cd/Sq.m	N.A.	N.A.	0.40
Street C West Veil Lum	Veiling Luminance	Cd/Sq.m	N.A.	0.25	N.A.
Street D East Luminance	Luminance	Cd/Sq.m	N.A.	N.A.	0.82
Street D East Veil Lum	Veiling Luminance	Cd/Sq.m	N.A.	0.12	N.A.
Street D West Luminance	Luminance	Cd/Sq.m	N.A.	N.A.	0.50
Street D West Veil Lum	Veiling Luminance	Cd/Sq.m	N.A.	0.20	N.A.
Street E East Luminance	Luminance	Cd/Sq.m	N.A.	N.A.	0.83
Street E East Veil Lum	Veiling Luminance	Cd/Sq.m	N.A.	0.24	N.A.
Street E West Luminance	Luminance	Cd/Sq.m	N.A.	N.A.	0.49
Street E West Veil Lum	Veiling Luminance	Cd/Sq.m	N.A.	0.20	N.A.
Street F East Luminance	Luminance	Cd/Sq.m	N.A.	N.A.	0.73
Street F East Veil Lum	Veiling Luminance	Cd/Sq.m	N.A.	0.14	N.A.
Street F West Luminance	Luminance	Cd/Sq.m	N.A.	N.A.	0.45
Street F West Veil Lum	Veiling Luminance	Cd/Sq.m	N.A.	0.44	N.A.
Street G1	Illuminance	Lux	5.76	N.A.	13.25
Street G2	Illuminance	Lux	4.58	N.A.	10.07
Street G3	Illuminance	Lux	5.00	N.A.	11.01
Street G3	Illuminance	Lux	4.71	N.A.	11.31

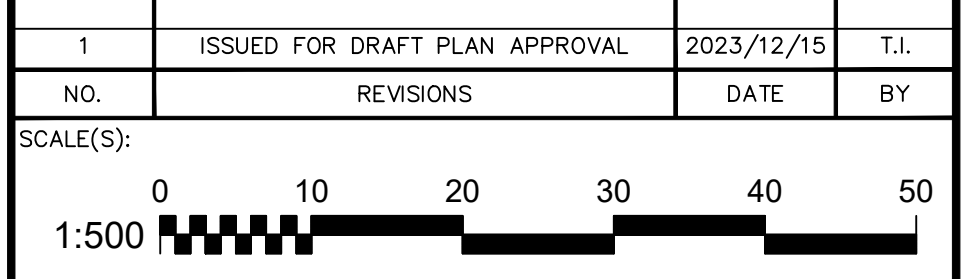
CONTRACTOR TO PROVIDE AS-BUILT DRAWINGS UPON COMPLETION OF ALL WORKS TO THE ODAN/DETECH GROUP

CONTRACTOR TO VERIFY ALL INVERTS, SIZE, MATERIAL, AND LOCATION OF ALL SERVICES PRIOR TO CONSTRUCTION AND REPORT ANY DISCREPANCIES TO THE ODAN/DETECH GROUP



- KEY PLAN**
Scale: N.T.S.
- SUBJECT LANDS**
- PROPOSED STREETLIGHT: COBRA-STYLE, DIRECT BURIED 7.8m STEEL POLE, 1.8m ALUMINUM TAPERED ELLIPTICAL ARM, RFS-45W16LED4K-G2-R2S (45W)
QTY: 47
 - PROPOSED STREETLIGHT: COBRA-STYLE, DIRECT BURIED 7.8m STEEL POLE, 1.8m ALUMINUM TAPERED ELLIPTICAL ARM, RFS-53W16LED4K-G2-R2S (53W)
QTY: 11

NO.	REVISIONS	DATE	BY
1	ISSUED FOR DRAFT PLAN APPROVAL	2023/12/15	T.I.



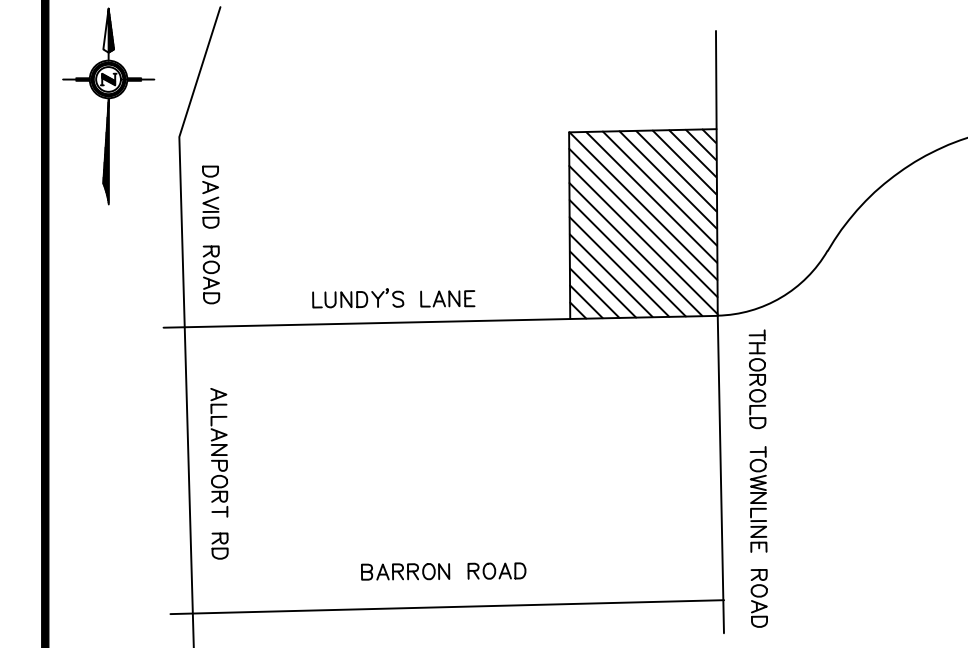
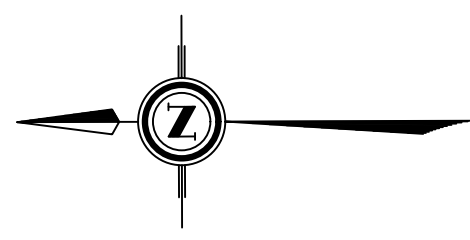
DRAWING TITLE: STREETLIGHTING LAYOUT

PROJECT: HIGHWAY 20 & THOROLD TOWNLINE ROAD SUBDIVISION
EAST SIDE OF GARNER RD, SOUTH OF LUNDY'S LANE
THOROLD, ONTARIO

CLIENT: RUDANCO HOSPITALITY CORPORATION
4728 DORCHESTER RD.
NIAGARA FALLS



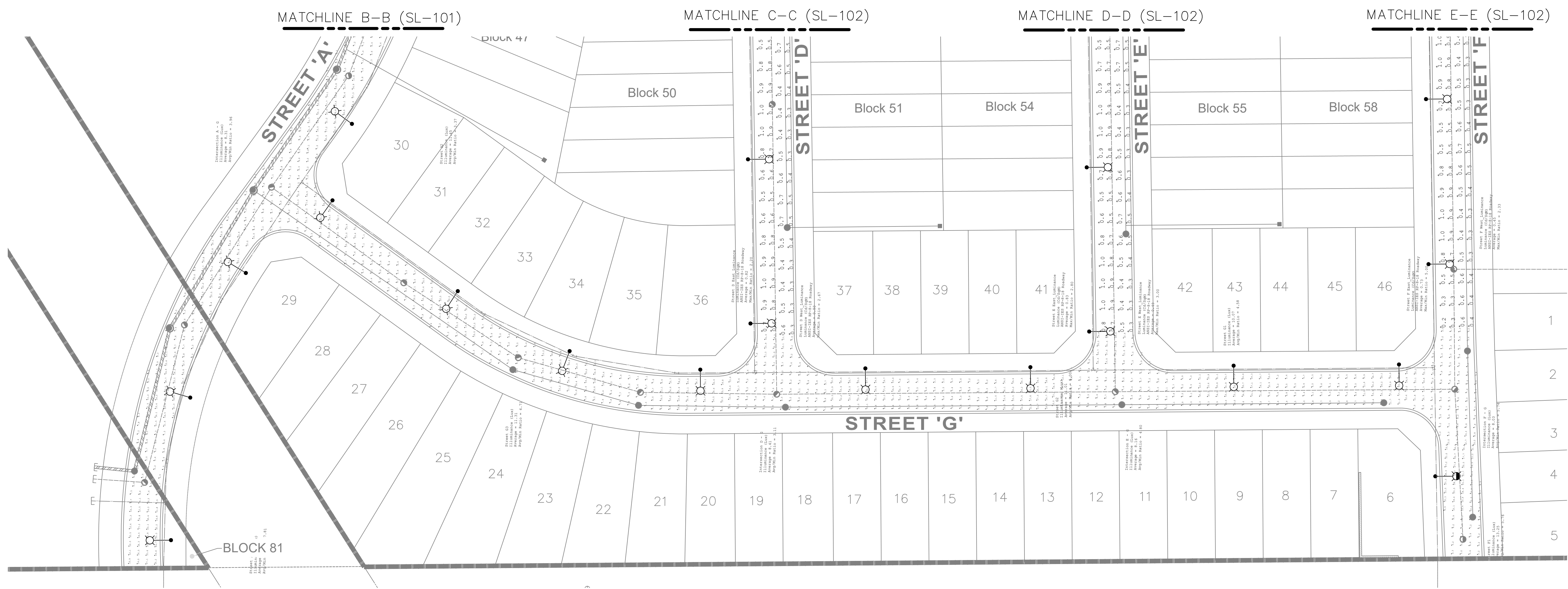
	DESIGNED BY:	T.I.	PROJECT No:	0121
	DRAWN BY:	T.I.	DATE:	2023/12/15
	CHECKED BY:	A.B.	DRAWING No.:	SL-102
	APPROVED BY:	A.B.	ENGINEER	



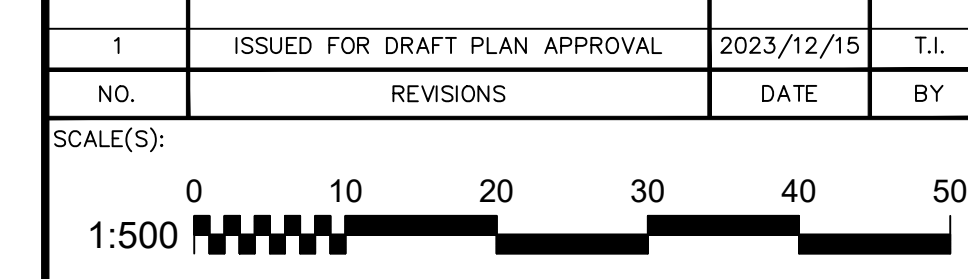
KEY PLAN
Scale: N.T.S.

SUBJECT LANDS

- PROPOSED STREETLIGHT: COBRA-STYLE, DIRECT BURIED 7.8m STEEL POLE, 1.8m ALUMINUM TAPERED ELLIPTICAL ARM, RFS-45W16LED4K-G2-R2S (45W)
 QTY: 47
- PROPOSED STREETLIGHT: COBRA-STYLE, DIRECT BURIED 7.8m STEEL POLE, 1.8m ALUMINUM TAPERED ELLIPTICAL ARM, RFS-53W16LED4K-G2-R2S (53W)
 QTY: 11



NO.	REVISIONS	DATE	BY
1	ISSUED FOR DRAFT PLAN APPROVAL	2023/12/15	T.I.



DRAWING TITLE:
STREETLIGHTING LAYOUT

PROJECT:
HIGHWAY 20 & THOROLD TOWNLINE ROAD SUBDIVISION
EAST SIDE OF GARNER RD, SOUTH OF LUNDY'S LANE
THOROLD, ONTARIO

CLIENT:
RUDANCO HOSPITALITY CORPORATION
4728 DORCHESTER RD.
NIAGARA FALLS



	DESIGNED BY:	PROJECT No:
	T.I.	0121
	DRAWN BY:	DATE:
	T.I.	2023/12/15
CHECKED BY:	DRAWING No.:	
A.B.	SL-103	
APPROVED BY:	ENGINEER	
A.B.		

CONTRACTOR TO PROVIDE AS-BUILT DRAWINGS UPON COMPLETION OF ALL WORKS TO THE ODAN/DETECH GROUP

CONTRACTOR TO VERIFY ALL INVERTS, SIZE, MATERIAL, AND LOCATION OF ALL SERVICES PRIOR TO CONSTRUCTION AND REPORT ANY DISCREPANCIES TO THE ODAN/DETECH GROUP