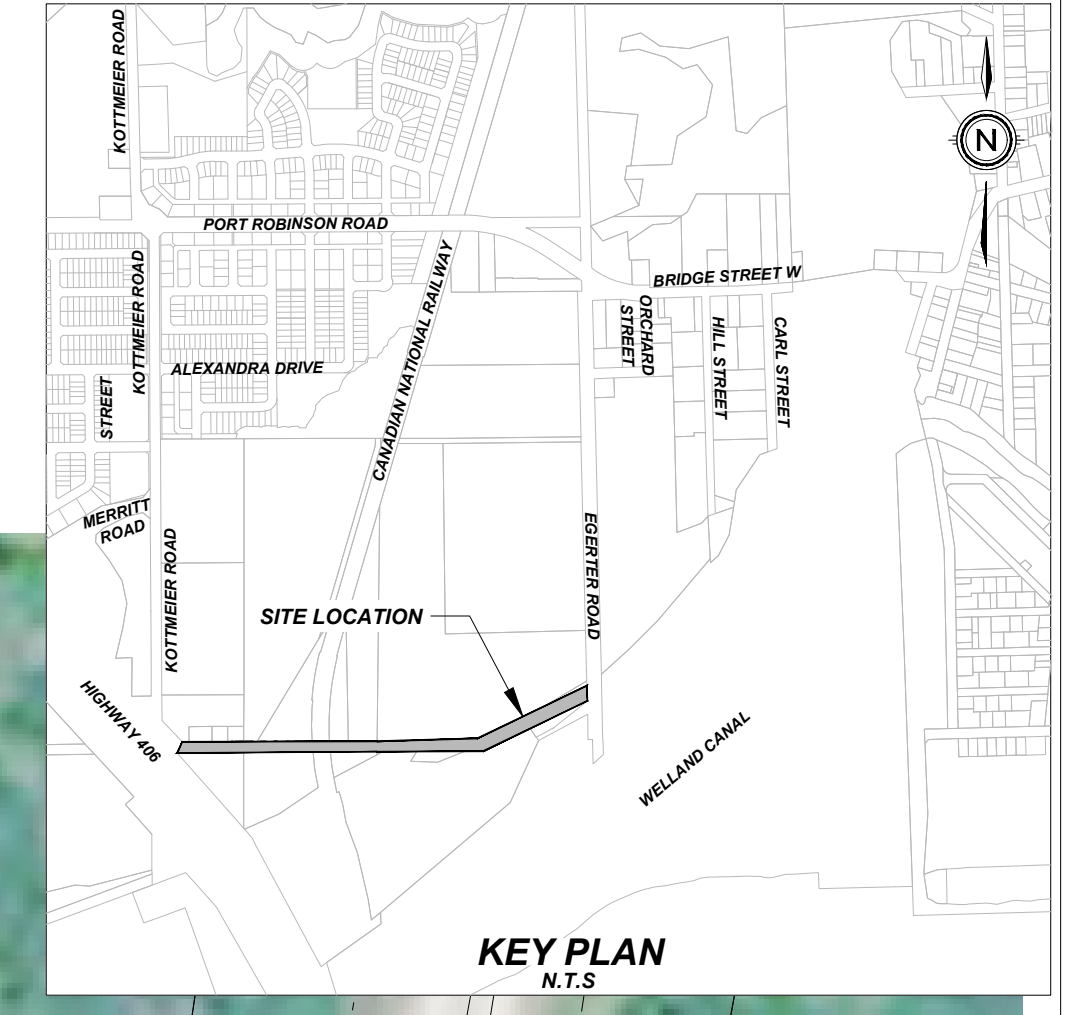


**LEGEND**

WV ●	PROP WATER VALVE
HYD ○	EX HYDRANT
HYD ●	PROP HYDRANT
CB □	EX CATCHBASIN
CB ■	PROP CATCHBASIN
STM ○	EX STORM MANHOLE
MH ●	PROP STORM MANHOLE
SAN ○	EX SANITARY MANHOLE
MH ●	PROP SANITARY MANHOLE
PLUG C	EX PLUG
PLUG ●	PROP PLUG
HP ○	EX HYDRO POLE
LS ○	EX LIGHT STANDARD
LS ●	PROP LIGHT POLE
DOOR	DOOR
---	EX WATERMAIN
---	PROP WATERMAIN
---	EX STORM SEWER
---	PROP STORM SEWER
---	EX SANITARY SEWER
---	PROP SANITARY SEWER
---	PROP CURB
○	PROP TREE



#	REVISION	DATE	INIT
0	ISSUED FOR ENVIRONMENTAL COMMENTS		Z.C

**NOTES:**

- THE POSITION OF POLE LINES, CONDUITS, WATERMAINS, SEWER, AND OTHER UNDERGROUND AND OVERGROUND UTILITIES AND STRUCTURES IS NOT NECESSARILY SHOWN ON THE CONTRACT DRAWINGS AND, WHERE SHOWN, THE ACCURACY OF THE POSITION OF SUCH UTILITIES AND STRUCTURES IS NOT GUARANTEED, BEFORE STARTING WORK, THE CONTRACTOR SHALL INFORM HIMSELF OF THE EXACT LOCATION OF ALL SUCH UTILITIES AND STRUCTURES AND SHALL ASSUME ALL LIABILITY FOR DAMAGE TO THEM.
- PROPERTY LINES WERE PLOTTED USING REGISTERED PLANS AND BARS LOCATED IN THE FIELD. TO VERIFY THE ACCURACY OF THESE PROPERTY LINES, A LEGAL SURVEY SHOULD BE PERFORMED PRIOR TO CONSTRUCTION.
- ALL CONSTRUCTION MUST COMPLY WITH THE NIAGARA PENINSULA STANDARD CONTRACT DOCUMENT.

DRAFTING	Z.C
DESIGN	A.K
CHECKED BY	Z.B
APPROVED BY	A.K



**ROAD EXTENSION BETWEEN KOTTMEIER, MERRIT, EGERTER, TOWPATH CITY OF THOROLD OPTION 2 SERVICING CONCEPT**

CONSULTANT FILE No.	22163
DATE	2024-05-02
PRINTED	2024-05-03
SCALE	1:500 m
REF No.	
DWG No.	22163-SCP-OPT2
REV	0



**LEGEND**

WV ●	PROP WATER VALVE
HYD ○	EX HYDRANT
HYD ●	PROP HYDRANT
CB □	EX CATCHBASIN
CB ■	PROP CATCHBASIN
STM ○	EX STORM MANHOLE
STM ●	PROP STORM MANHOLE
SAN ○	EX SANITARY MANHOLE
SAN ●	PROP SANITARY MANHOLE
PLUG C	EX PLUG
PLUG E	PROP PLUG
HP ○	EX HYDRO POLE
LS ○	EX LIGHT STANDARD
LS ●	PROP LIGHT POLE
DOOR	DOOR
---	EX WATERMAIN
---	PROP WATERMAIN
---	EX STORM SEWER
---	PROP STORM SEWER
---	EX SANITARY SEWER
---	PROP SANITARY SEWER
---	PROP CURB
○	PROP TREE



0	ISSUED FOR ENVIRONMENTAL COMMENTS	Z.C
#	REVISION	DATE
		INIT

**NOTES:**

- THE POSITION OF POLE LINES, CONDUITS, WATERMANS, SEWER, AND OTHER UNDERGROUND AND OVERGROUND UTILITIES AND STRUCTURES IS NOT NECESSARILY SHOWN ON THE CONTRACT DRAWINGS AND, WHERE SHOWN, THE ACCURACY OF THE POSITION OF SUCH UTILITIES AND STRUCTURES IS NOT GUARANTEED, BEFORE STARTING WORK, THE CONTRACTOR SHALL INFORM HIMSELF OF THE EXACT LOCATION OF ALL SUCH UTILITIES AND STRUCTURES AND SHALL ASSUME ALL LIABILITY FOR DAMAGE TO THEM.
- PROPERTY LINES WERE PLOTTED USING REGISTERED PLANS AND BARS LOCATED IN THE FIELD. TO VERIFY THE ACCURACY OF THESE PROPERTY LINES, A LEGAL SURVEY SHOULD BE PERFORMED PRIOR TO CONSTRUCTION.
- ALL CONSTRUCTION MUST COMPLY WITH THE NIAGARA PENINSULA STANDARD CONTRACT DOCUMENT.

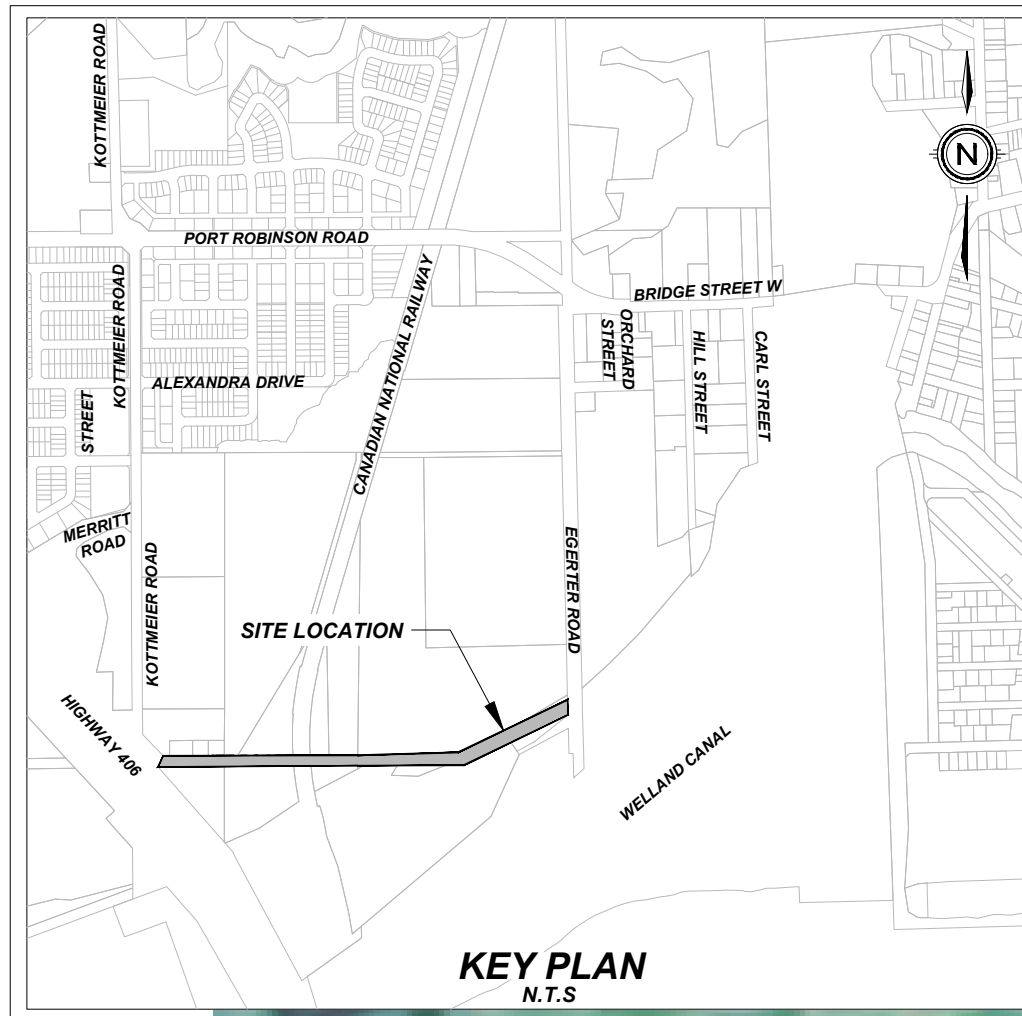
DRAFTING	Z.C
DESIGN	A.K
CHECKED BY	Z.B
APPROVED BY	A.K



**ROAD EXTENSION BETWEEN KOTTMEIER, MERRIT, EGERTER, TOWPATH**  
**CITY OF THOROLD**  
**OPTION 2 SERVICING CONCEPT**

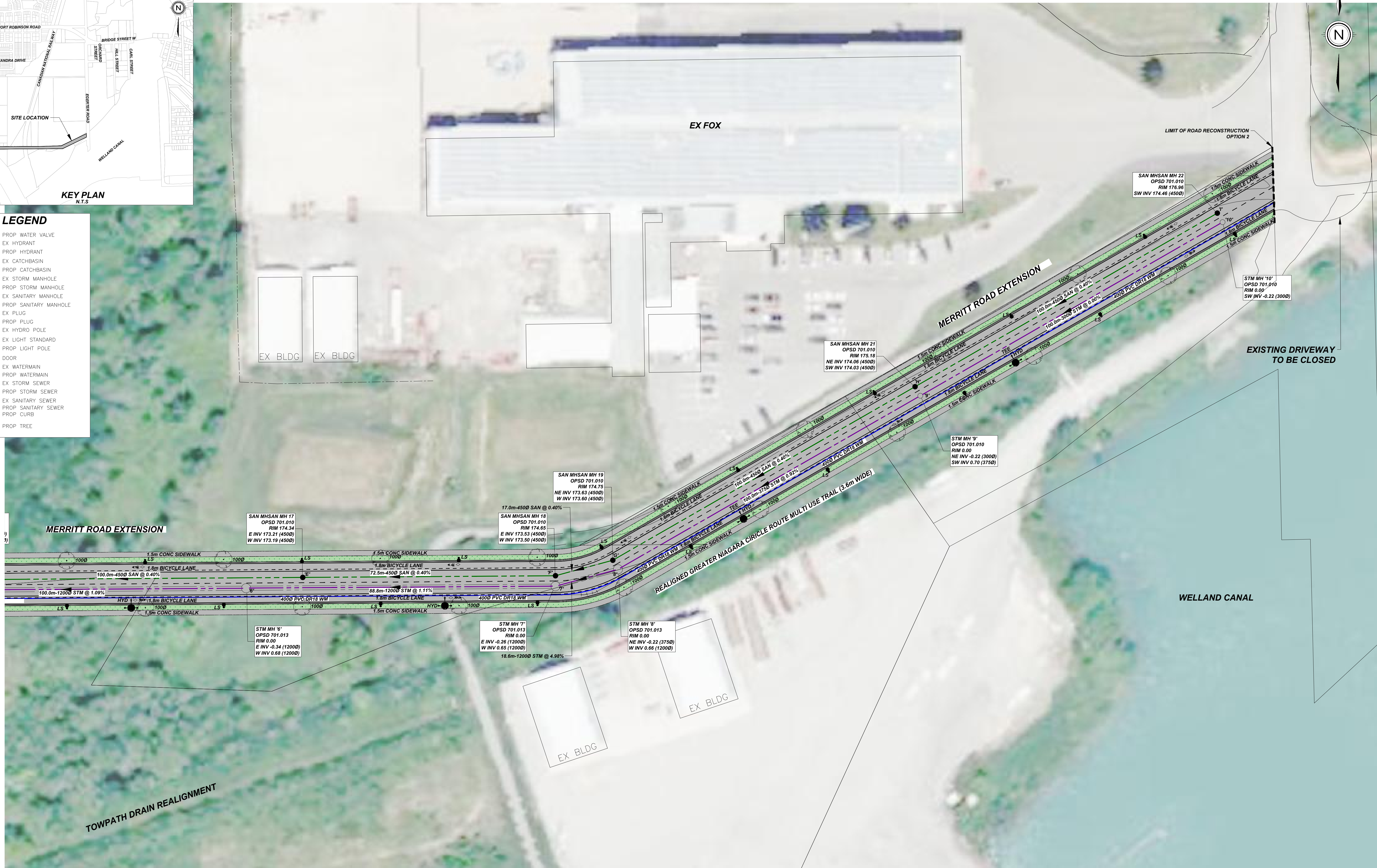
CONSULTANT FILE No.	22163
DATE	2024-04-12
PRINTED	2024-05-03
SCALE	1:200 m
REF No.	
DWG No.	22163-SCP-OPT2
REV	0





**LEGEND**

WV ●	PROP WATER VALVE
HYD ○	EX HYDRANT
HYD ●	PROP HYDRANT
CB □	EX CATCHBASIN
CB ■	PROP CATCHBASIN
STM ○	EX STORM MANHOLE
STM ●	PROP STORM MANHOLE
SAN ○	EX SANITARY MANHOLE
SAN ●	PROP SANITARY MANHOLE
PLUG ⊥	EX PLUG
PLUG ⊥	PROP PLUG
HP ○	EX HYDRO POLE
HP ○	PROP HYDRO POLE
LS ⊥	EX LIGHT STANDARD
LS ⊥	PROP LIGHT STANDARD
DOOR	DOOR
---	EX WATERMAIN
---	PROP WATERMAIN
---	EX STORM SEWER
---	PROP STORM SEWER
---	EX SANITARY SEWER
---	PROP SANITARY SEWER
---	PROP CURB
○	PROP TREE



#	ISSUED FOR ENVIRONMENTAL COMMENTS	REVISION	DATE	INIT
0	ISSUED FOR ENVIRONMENTAL COMMENTS			Z.C
#	REVISION		DATE	INIT

**NOTES:**

1. THE POSITION OF POLE LINES, CONDUITS, WATERMANS, SEWER, AND OTHER UNDERGROUND AND OVERGROUND UTILITIES AND STRUCTURES IS NOT NECESSARILY SHOWN ON THE CONTRACT DRAWINGS AND, WHERE SHOWN, THE ACCURACY OF THE POSITION OF SUCH UTILITIES AND STRUCTURES IS NOT GUARANTEED, BEFORE STARTING WORK, THE CONTRACTOR SHALL INFORM HIMSELF OF THE EXACT LOCATION OF ALL SUCH UTILITIES AND STRUCTURES AND SHALL ASSUME ALL LIABILITY FOR DAMAGE TO THEM.
2. PROPERTY LINES WERE PLOTTED USING REGISTERED PLANS AND BARS LOCATED IN THE FIELD. TO VERIFY THE ACCURACY OF THESE PROPERTY LINES, A LEGAL SURVEY SHOULD BE PERFORMED PRIOR TO CONSTRUCTION.
3. ALL CONSTRUCTION MUST COMPLY WITH THE NIAGARA PENINSULA STANDARD CONTRACT DOCUMENT.

DRAFTING	Z.C
DESIGN	A.K
CHECKED BY	Z.B
APPROVED BY	A.K



**ROAD EXTENSION BETWEEN KOTTMEIER, MERRIT, EGERTER, TOWPATH CITY OF THOROLD OPTION 2 SERVICING CONCEPT**

CONSULTANT FILE No.	22163
DATE	2024-04-12
PRINTED	2024-05-03
SCALE	1:200 m
REF No.	
DWG No.	22163-SCP-OPT2
REV	0