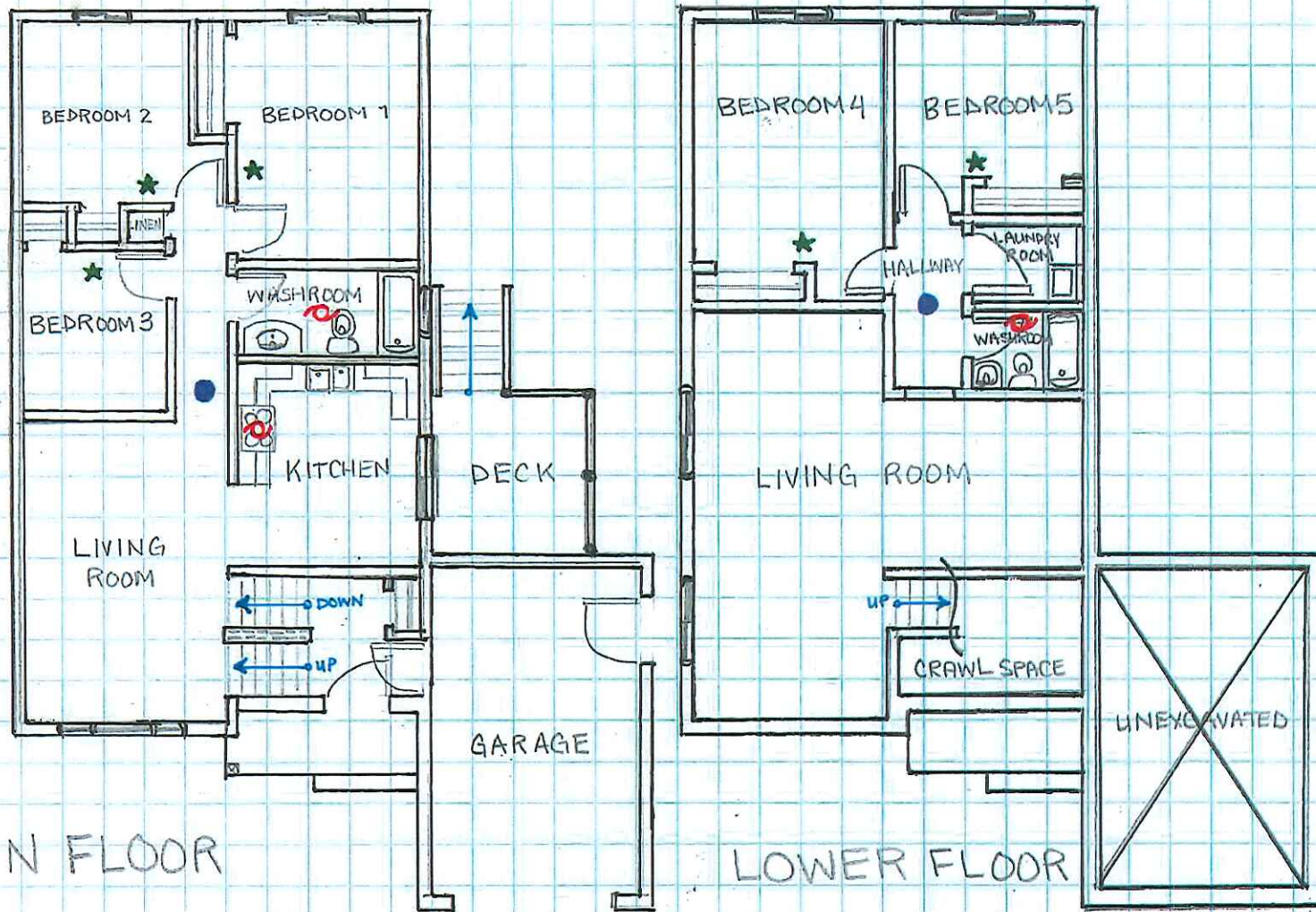


SAMPLE FLOOR PLAN A






MAIN FLOOR

LOWER FLOOR

BUILDING NOTES:

Number of Bedrooms: 5
 Number of Occupants: 5

-  Exhaust Fan
-  Smoke alarm & Carbon Monoxide Detector
-  Smoke alarm

MAIN FLOOR:

Gross Floor Area: 176.0m²
 Floor Area Bedroom 1: 27.5m²
 Floor Area Bedroom 2: 16.0m²
 Floor Area Bedroom 3: 12.25m²

LOWER FLOOR:

Gross Floor Area: 147.5m²
 Floor Area Bedroom 4: 27.5m²
 Floor Area Bedroom 5: 22.0m²

SAMPLE FLOOR PLAN B

