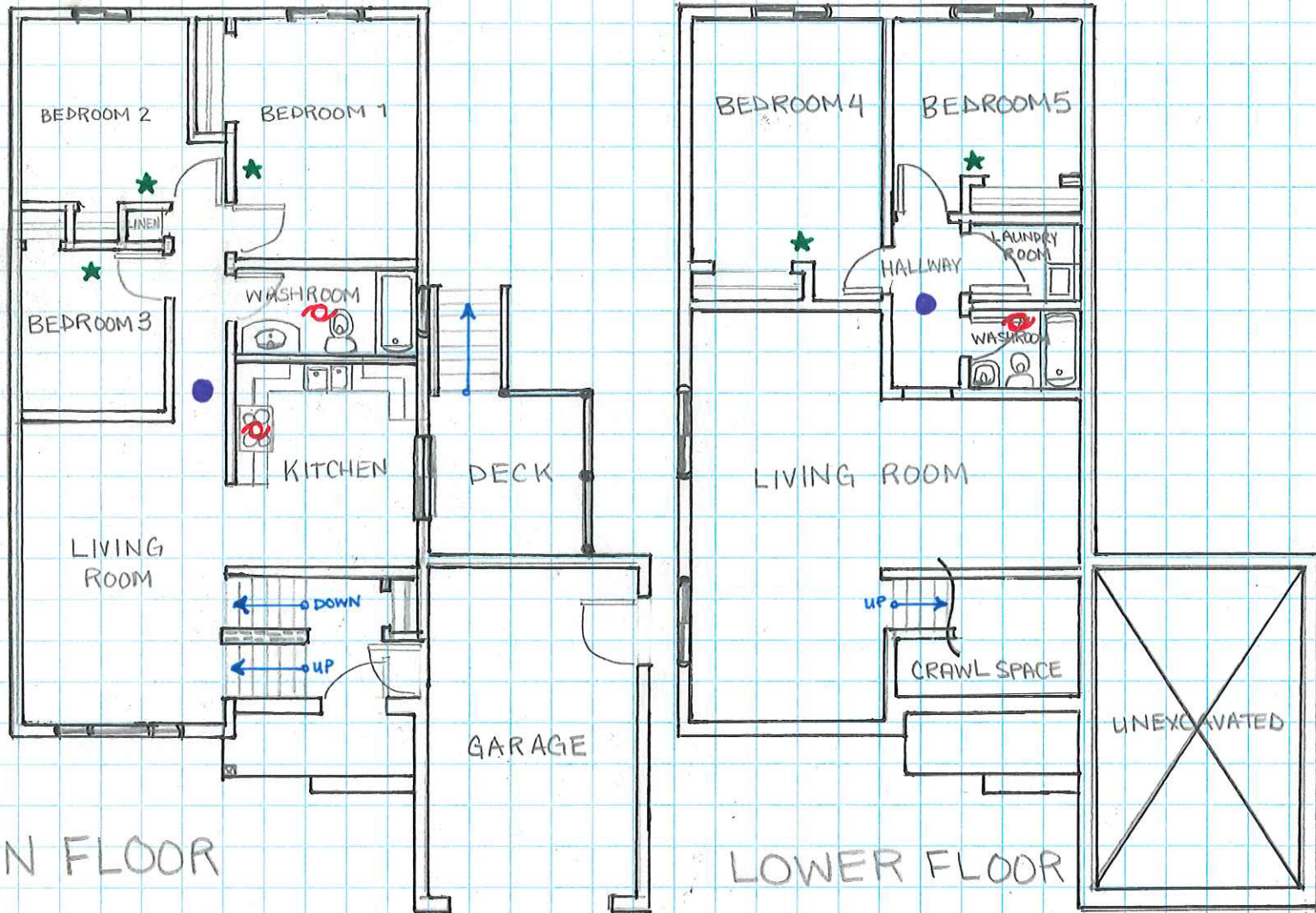


SAMPLE FLOOR PLAN A






MAIN FLOOR

LOWER FLOOR

BUILDING NOTES:

Number of Bedrooms:	5
Number of Occupants:	5

-  Exhaust Fan
-  Smoke alarm & Carbon Monoxide Detector
-  Smoke alarm

MAIN FLOOR:

Gross Floor Area:	1765.0m ²
Floor Area Bedroom 1:	27.5m ²
Floor Area Bedroom 2:	16.0m ²
Floor Area Bedroom 3:	12.25m ²

LOWER FLOOR:

Gross Floor Area:	147.5m ²
Floor Area Bedroom 4:	27.5m ²
Floor Area Bedroom 5:	22.0m ²